



RIB LAKE
SCHOOL DISTRICT

RIB LAKE SCHOOL DISTRICT EXECUTIVE SUMMARY

PROVIDED BY FINDORFF

//////////////// 1200 North Street • Rib Lake, WI ////////////////// 08.22.2025

What's Happening?

With school starting back up on Monday, the last few weeks have been filled with wrapping up the remodeled spaces in both the middle and high school. The middle school science room casework was wrapped up along with the plumbing fixtures in the restroom and locker rooms. In the high school, the temporary lunchroom has been wrapped up and all of the previously removed ceiling tile has been replaced.

The wood shop dust collector showed up to site this past week and the mechanical contractor has begun the installation. The outdoor unit has been set with only a few interior and exterior connections to go.

The Addition this week reached another milestone as the Gym Floor was poured! It took over 150 yards of concrete to complete this pour. The structural steel framing for the front corridor is ongoing with the vestibule columns and decking completed.



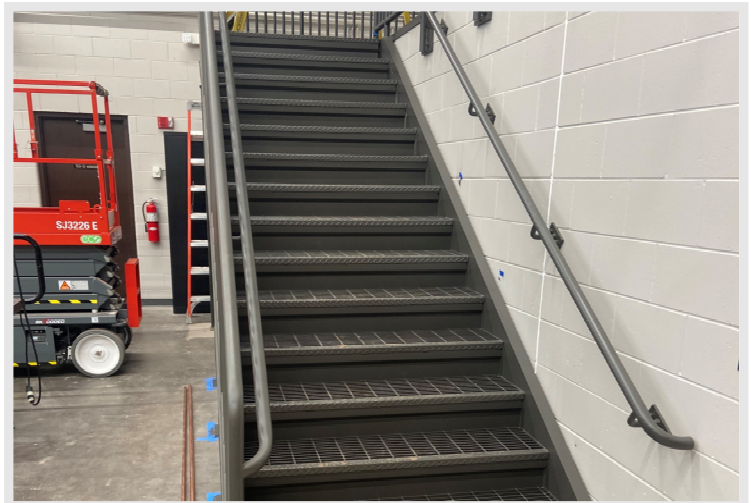
The gym slab has been poured and covered with plastic for the curing process.

Past Work

- Gym Addition Slab on Grade Pour
- Addition Front Entrance Structural Framing
- Middle School Locker Room Locker Installation
- Middle School Re-Roofing

Upcoming Work

- Addition Above Ceiling Rough Ins
- Addition Structural Steel Detailing
- Addition Brick Install
- New Fitness Center Drywall



The stairway in the wood shop has received its final coat of paint.

DID YOU KNOW?

A laser screed was used to help pour the concrete for the new gym slab. Laser screed are a concrete finishing tool that uses a laser set at a certain height to make sure the screed is always at the right height and to make sure it stays level. Inside the laser screed there is an auger, a roller, and a vibrating edge that all work together to create the nice flat finish.

Questions?

Project Manager, Ryan Treichel / 414.323.0611 / rtreichel@findorff.com

Superintendent, Jeremy Rosenthal / 608.287.8083 / jrosenthal@findorff.com

Findorff
BUILDING & BEYOND



RIB LAKE
SCHOOL DISTRICT

RIB LAKE SCHOOL DISTRICT EXECUTIVE SUMMARY

PROVIDED BY FINDORFF

/////////////////////////////////1200 North Street • Rib Lake, WI /////////////////////////////////// PAGE 2



*The dust collector installation has begun outside of the woodshop.
The final interior and exterior connections are next.*



*The middle school science room has received the finishing touches
on the countertops and casework giving the room a nice, new feel.*



A laser screed was used to make sure the concrete was flat, level, and poured to the correct height.

Questions?

Project Manager, Ryan Treichel / 414.323.0611 / rtreichel@findorff.com

Superintendent, Jeremy Rosenthal / 608.287.8083 / jrosenthal@findorff.com

Findorff
BUILDING & BEYOND