

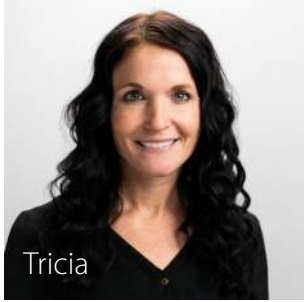


Prepared For: Rib Lake School District

2023 Facilities Study Board Presentation



INTRODUCTIONS



Tricia

Planning / Comm.



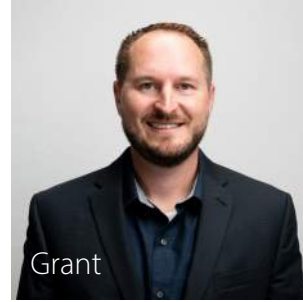
David

Planning / Architect



Nathan

Architect



Grant

Civil



Heather

Interiors



Michael

HVAC



Tim

Electrical



Nick

Plumbing



Chris

Plumbing



Jason

Low Voltage



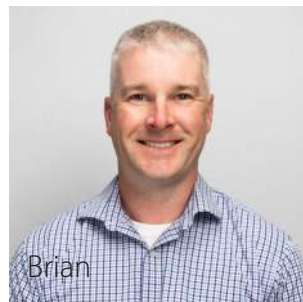
Max

System & Reports



Dawson

System & Reports



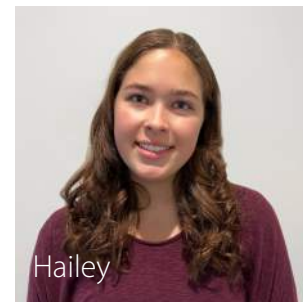
Brian

Building Scans



Hunter

Building Scans



Hailey

Youth Apprentice

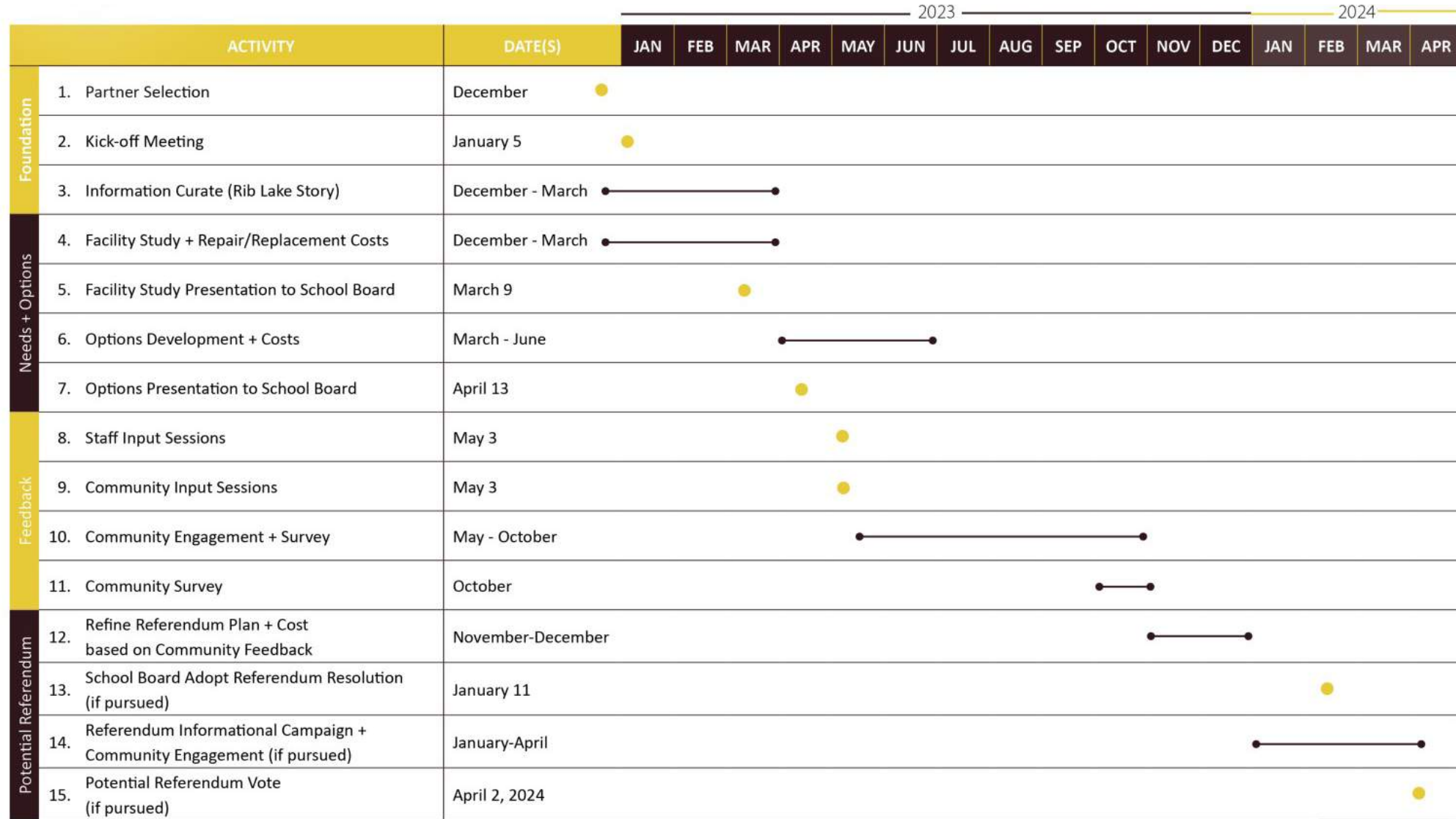


PRESENTATION AGENDA

01	FACILITY PLANNING TIMELINE	S-04
02	SAVE THE DATE - INPUT SESSIONS	S-05
03	EXISTING CONDITIONS ASSESSMENT	S-06
04	EDUCATIONAL SPACE / ADEQUACY	S-18
05	FUTURE OPTIONS DISCUSSION	S-30
06	NEXT STEPS	S-32



FACILITY PLANNING TIMELINE



SAVE THE DATE



Staff & Community Input Sessions

10:00 am Community

3:30 pm Staff Only

6:00 pm Community



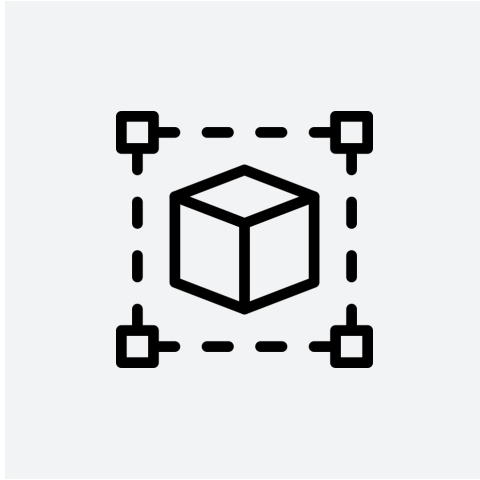


Existing Conditions Assessment

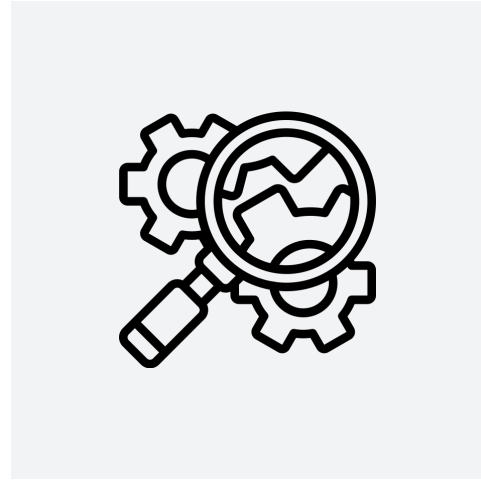
03



EXISTING CONDITIONS ASSESSMENT



Scan


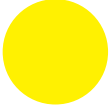



Inspect



Assess

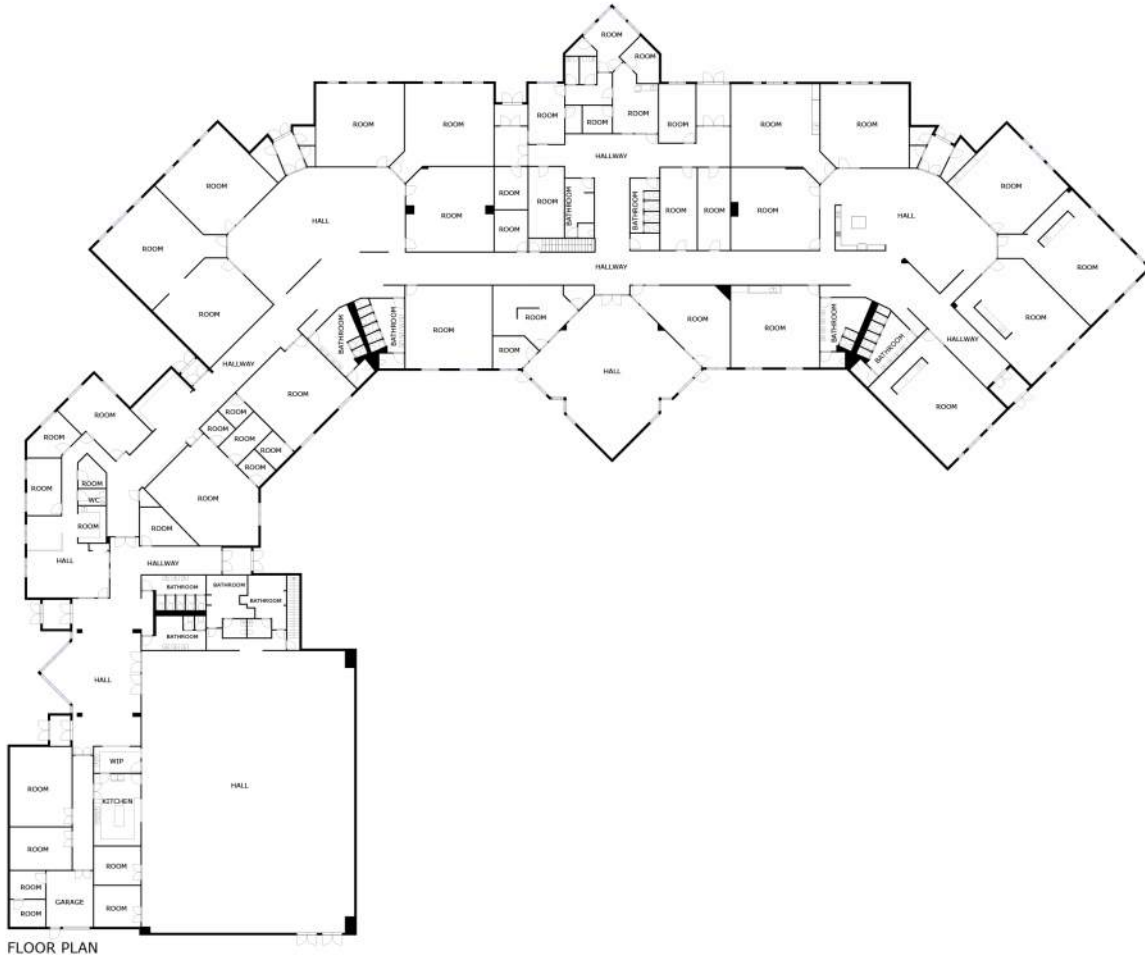
EXISTING CONDITIONS ASSESSMENT

-  Good (10+ years to repair / replace)
-  Fair (5-10 years to repair / replace)
-  Poor (0-5 years to repair / replace)

EXISTING CONDITIONS ASSESSMENT

Rib Lake Elementary

Building Condition: ●



- CODE COMPLIANCE
- SAFETY & SECURITY
- ADA
- STRUCTURAL
- HVAC
- ELECTRICAL
- PLUMBING
- INTERIOR FINISHES
- FLOORING
- CEILING
- FURNITURE
- ROOF
- EXTERIOR ENVELOPE
- CIVIL



Year Built: 1999 (24 years)



Square Footage: 60,046 SF



Building Type: Type III-B - Unprotected Combustible



EXISTING CONDITIONS ASSESSMENT

Rib Lake Middle School

Building Condition: ●



- CODE COMPLIANCE
- SAFETY & SECURITY
- ADA
- STRUCTURAL
- HVAC
- ELECTRICAL
- PLUMBING
- INTERIOR FINISHES
- FLOORING
- CEILING
- FURNITURE
- ROOF
- EXTERIOR ENVELOPE
- CIVIL



Year Built: 1981 (42 years)



Square Footage: 30,822 SF



Building Type: Type II-B - Unprotected Non-Combustible



EXISTING CONDITIONS ASSESSMENT

Rib Lake High School

Building Condition: ●



- CODE COMPLIANCE
- SAFETY & SECURITY
- ADA
- STRUCTURAL
- HVAC
- ELECTRICAL
- PLUMBING
- INTERIOR FINISHES
- FLOORING
- CEILING
- FURNITURE
- ROOF
- EXTERIOR ENVELOPE
- CIVIL



Year Built: Original 1964 (59 years) / Northeast Addition 1999 (24 years)



Square Footage: 58,958 SF



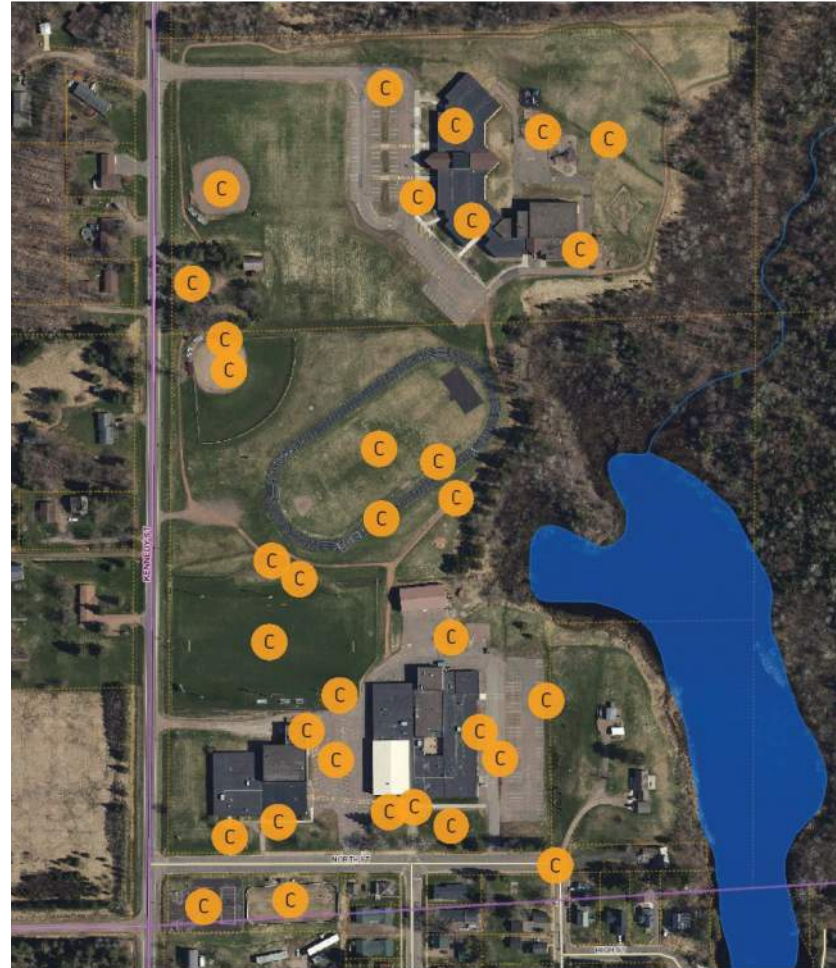
Building Type: Type II-B - Unprotected Non-Combustible





EXISTING CONDITIONS ASSESSMENT

Athletics and Path

Condition: ●





EXISTING CONDITIONS ASSESSMENT

Rib Lake Elementary			TOTAL
	Poor 0-5 years	Fair 5-10 Years	
Architectural <small>(ADA, Safety, Structural, Interior Finishes, Flooring, Ceiling, Roof, Exterior Envelope)</small>	\$1,033,480	\$272,200	\$1,305,680
Civil	\$799,200	71,500	\$870,700
HVAC	\$13,200	\$326,200	\$339,400
Electrical	\$432,150	\$471,700	\$903,850
Plumbing	\$15,100	\$1,300	\$16,400
TOTAL	\$2,293,130	\$1,142,900	\$3,436,030





EXISTING CONDITIONS ASSESSMENT

Rib Lake Middle School	 Poor 0-5 years	 Fair 5-10 Years	TOTAL
Architectural (ADA, Safety, Structural, Interior Finishes, Flooring, Ceiling, Roof, Exterior Envelope)	\$1,155,430	\$168,050	\$1,323,480
Civil	\$149,600	\$32,500	\$182,100
HVAC	\$32,600	\$9,800	\$42,400
Electrical	\$1,142,300	-	\$1,142,300
Plumbing	\$56,150	-	\$56,150
TOTAL	\$2,536,080	\$210,350	\$2,746,430





EXISTING CONDITIONS ASSESSMENT

Rib Lake High School	 Poor 0-5 years	 Fair 5-10 Years	TOTAL
Architectural <small>(ADA, Safety, Structural, Interior Finishes, Flooring, Ceiling, Roof, Exterior Envelope)</small>	\$2,272,430	\$354,800	\$2,627,230
Civil	\$292,400	\$32,500	\$324,900
HVAC	\$115,200	\$4,500	\$119,700
Electrical	\$2,112,900	\$461,400	\$2,574,300
Plumbing	\$151,100	\$93,100	\$244,200
TOTAL	\$4,944,030	\$946,300	\$5,890,330





EXISTING CONDITIONS ASSESSMENT

Outdoor Athletics & Path	 Poor 0-5 years	 Fair 5-10 Years	TOTAL
TOTAL	\$1,637,600	\$117,000	\$1,754,600



EXISTING CONDITIONS ASSESSMENT

	 Poor 0-5 years	 Fair 5-10 Years	TOTAL
Rib Lake Elementary	\$2,293,130	\$1,142,900	\$3,436,030
Rib Lake Middle School	\$2,536,080	\$210,350	\$2,746,430
Rib Lake High School	\$4,944,030	\$946,300	\$5,890,330
Outdoor Athletics & Path	\$1,637,600	\$117,000	\$1,754,600
TOTAL	\$11,410,840	\$2,416,550	\$13,827,390



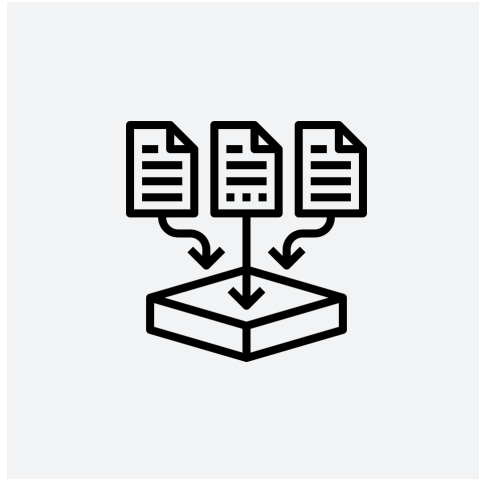


Educational Space / Capacity Analysis

04



EDUCATIONAL SPACE / CAPACITY ANALYSIS



Collect



Interview



Analyze

EDUCATIONAL SPACE / CAPACITY ANALYSIS

Rib Lake Elementary



EDUCATIONAL SPACE / CAPACITY ANALYSIS

Rib Lake Elementary

Classroom Size Analysis

Space	Current Student Count	Actual Classroom Size (SF)	Ideal Classroom Size (SF) Current Student Count X Design Area	Current % difference	Max Student Count Current Classroom Area / Design Area
Preschool Classroom 332	14	1,199	700	171%	24
Kindergarten Classroom 333	16	1,175	800	147%	24
Kindergarten Classroom 334	15	1,245	750	166%	25
Grade 1 Classroom 335	17	929	680	137%	23
Grade 1 Classroom 336	16	934	640	146%	23
Grade 2 Classroom 337	21	995	840	118%	25
SPED Classroom 338	12	899	480	187%	22
Grade 2 Classroom 339	20	934	800	117%	23
Computer Lab 340		692			
Grade 4 Classroom 342	13	936	455	206%	27
SPED Classroom 343	12	802	600	134%	16
Grade 3 Classroom 344	17	985	595	166%	28
Grade 3 Classroom 345	16	933	560	167%	27
Grade 4 Classroom 346	12	944	420	225%	27
Grade 5 Classroom 347	18	1,033	630	164%	30
Grade 5 Classroom 348	18	926	630	147%	26
Art Classroom 350	21	919	735	125%	26
Music Classroom 351	21	1,030	945	109%	23
Multi-purpose 302		1947			
Multi-purpose 312		1981			

Current Students

213 Not including Specials

Average

155%

Max Students

332

119

*Greatest Class size is second grade with 41 students, so 21 is the largest classroom size in the school



EDUCATIONAL SPACE / CAPACITY ANALYSIS

Rib Lake Elementary

Classroom Utilization Analysis

Space	Periods / Day Week	Classroom Occupied	Utilization Rate	Notes
Preschool Classroom 332	18	12	67%	
Kindergarten Classroom 333	18	12	67%	
Kindergarten Classroom 334	18	12	67%	
Grade 1 Classroom 335	18	12	67%	
Grade 1 Classroom 336	18	12	67%	
Grade 2 Classroom 337	18	12	67%	
SPED Classroom 338	18	7	39%	
Grade 2 Classroom 339	18	13	72%	
Computer Lab 340	18	0	0%	Currently used for OT/PT
Grade 4 Classroom 342	17	12	71%	
SPED Classroom 343	17	7	41%	
Grade 3 Classroom 344	17	12	71%	
Grade 3 Classroom 345	17	12	71%	
Grade 4 Classroom 346	17	12	71%	
Grade 5 Classroom 347	17	12	71%	
Grade 5 Classroom 348	17	12	71%	
Art Classroom 350	85	26	31%	
Music Classroom 351	85	32	38%	
Multi-purpose 302	85	20	24%	Used for volunteer reading, indoor recess + group meetings a couple of times a week.
Multi-purpose 312	85	25	29%	Used for morning announcements, indoor recess and group meetings a couple times a week.

Building Results

58%



EDUCATIONAL SPACE / CAPACITY ANALYSIS

Rib Lake Middle School

Classroom Size Analysis

Space	Current Student Count per Classroom Max	Actual Classroom Size (SF)	Ideal Classroom Size (SF) Current Student Count X Design Area	Classroom Size % Diff. Actual Size / Ideal Size	Class Size %Diff. when largest class 23* size enters MS
Social Studies Classroom 211	18	734	630	117%	91%
Foreign Language Classroom 213	14	745	490	152%	93%
Science Classroom 214	18	865	900	96%	75%
Math Classroom 215	17	729	595	123%	91%
Health Classroom 217	18	731	630	116%	91%
LA Classroom 218	17	727	595	122%	90%
LA Classroom 219	17	754	595	127%	94%
SPED Classroom 220	12	706	600	118%	101%
Art Classroom 221	17	952	850	112%	83%
FACS Classroom 225	17	1108	1020	109%	80%
Tech. Ed. Wood shop 203	17	1743	1275	137%	101%

Current Students

95 Middle School Enrollment

Average

121%

90%

* Greatest class size is second grade with 41 students, so 21 is the largest classroom size in the school. 21 plus 10% increase = 23 students



EDUCATIONAL SPACE / CAPACITY ANALYSIS

Rib Lake Middle School

Classroom Utilization Analysis

Space	Periods/ Day	Classroom Occupied	Utilization Rate	Notes
Social Studies Classroom 211	9	8	89%	
Foreign Language Classroom 213	9	1	11%	
Science Classroom 214	9	8	89%	
Math Classroom 215	9	8	89%	
Health Classroom 217	9	2	22%	
LA Classroom 218	9	7	78%	Typical Team Teaches in the IMC
LA Classroom 219	9	8	89%	
SPED Classroom 220	9	5	56%	
Art Classroom 221	9	1	11%	
FACS Classroom 225	9	1	11%	
Tech. Ed. Wood shop 203	9	4	44%	
				This includes the use of the classroom as a study hall.

Average

54%



EDUCATIONAL SPACE / CAPACITY ANALYSIS

Rib Lake High School



EDUCATIONAL SPACE / CAPACITY ANALYSIS

Rib Lake High School

Classroom Size Analysis

Space	Current Student Count per Classroom Max	Actual Classroom Size (SF)	Ideal Classroom Size (SF) Current Student Count X Design Area	Classroom Size % Diff. Actual Size / Ideal Size	Class Size %Diff. 15% growth
Math Classroom 107	23	682	805	85%	74%
Business & Tech. 109 +111	16	1,757	1200	146%	127%
FACS Classroom 112	17	1385	1020	136%	118%
Spanish Classroom 113	20	679	700	97%	84%
Social Studies Classroom 114	23	667	805	83%	72%
Health Classroom 115	26	671	910	74%	64%
English Classroom 116	21	672	735	91%	80%
Science Classroom 117	18	864	630	137%	119%
English Classroom 118	18	687	630	109%	95%
Science Classroom 120	25	843	875	96%	84%
Tech. Ed. Metal shop 121	15	1,930	1125	172%	149%
Tech Ed Autoshop 122	15	2,431	1125	216%	188%
Tech Ed Classroom 122A	15	719	525	137%	119%
Computer Lab 123	15	422	525	80%	70%
Resource / SPED 124+125	12	802	600	134%	116%
Chemistry Classroom 128	12	1,090	720	151%	132%
Choir 129	27	653	945	69%	60%
Band 130	53	1,550	3180	49%	42%
Art Classroom 131	14	1,363	700	195%	169%

Current Students

144 High School Enrollment

Average

119% **103%**

* Greatest class size is second grade with 41 students, so 21 is the largest classroom size in the school. 21 plus 10% increase = 23 students



EDUCATIONAL SPACE / CAPACITY ANALYSIS

Rib Lake High School

Classroom Utilization Analysis

Space	Periods / Day	Classroom Occupied	Utilization Rate	Notes
Math Classroom 107	9	8	89%	
Business & Tech. 109 +111	9	8	89%	
FACS Classroom 112	9	6	67%	
Spanish Classroom 113	9	7	78%	
Social Studies Classroom 114	9	7	78%	
Health Classroom 115	9	4	44%	
English Classroom 116	9	7	78%	
Science Classroom 117	9	0	0%	Storage
English Classroom 118	9	8	89%	
Science Classroom 120	9	6	67%	
Tech. Ed. Metal shop 121	9	2	22%	
Tech Ed Autoshop 122	9	0	0%	Used for Maintenance Storage
Tech Ed Classroom 122A	9	2	22%	
Computer Lab 123	9	0	0%	Not utilized
Resource / SPED 124+125	9	7	78%	
Chemistry Classroom 128	9	1	11%	
Choir 129	9	9	100%	
Band 130	9	9	100%	
Art Classroom 131	9	4	44%	
				This includes the use of the classroom as a study hall. Does not include PLT time or Prep.

Average

56%



EDUCATIONAL SPACE / CAPACITY ANALYSIS

	Current Count	Max Count	Classroom Size	Utilization Rate
Rib Lake Elementary	213	332	155%	67%
Rib Lake Middle School	95	n/a	121%	54%
Rib Lake High School	144	n/a	119%	56%





Future Options Discussion

05



FUTURE OPTIONS DISCUSSION

1. UPDATE AND MAINTAIN OUR FACILITIES
2. FITNESS CENTER - LARGER WITH BETTER COMMUNITY ACCESS
3. SECURE ENTRANCE AT MS/HS
4. CONNECT MS AND HS TO AVOID KIDS WALKING OUTSIDE TO GET TO CLASS
5. BIGGER GYM
6. TRACK
7. WOOD BOILER FOR ELEMENTARY (PENDING COST SAVINGS)
8. ELEMENTARY INTERNET/DATA INFRASTRUCTURE
9. DOME HAS BEEN DISCUSSED - FEMA DOME
10. BAND AND CHOIR AREAS
11. THEATER FOR STUDENT AND COMMUNITY USE
12. MOVE FOOTBALL FIELD TO TRACK
13. DAYCARE
14. ALL DAY 4K
15. SHARE SPACES WITH MS/HS





006

Facility Planning Next Steps



April 13 Board Meeting

Facility Planning Options Development
and Costs Presentation

NEXT STEPS



Staff & Community Input Sessions

10:00 am Community

3:30 pm Staff Only

6:00 pm Community